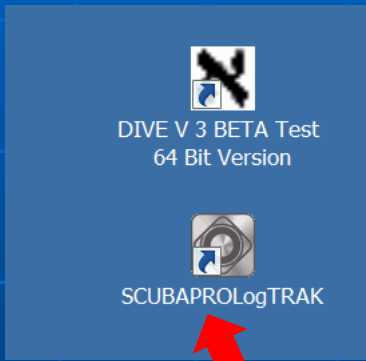


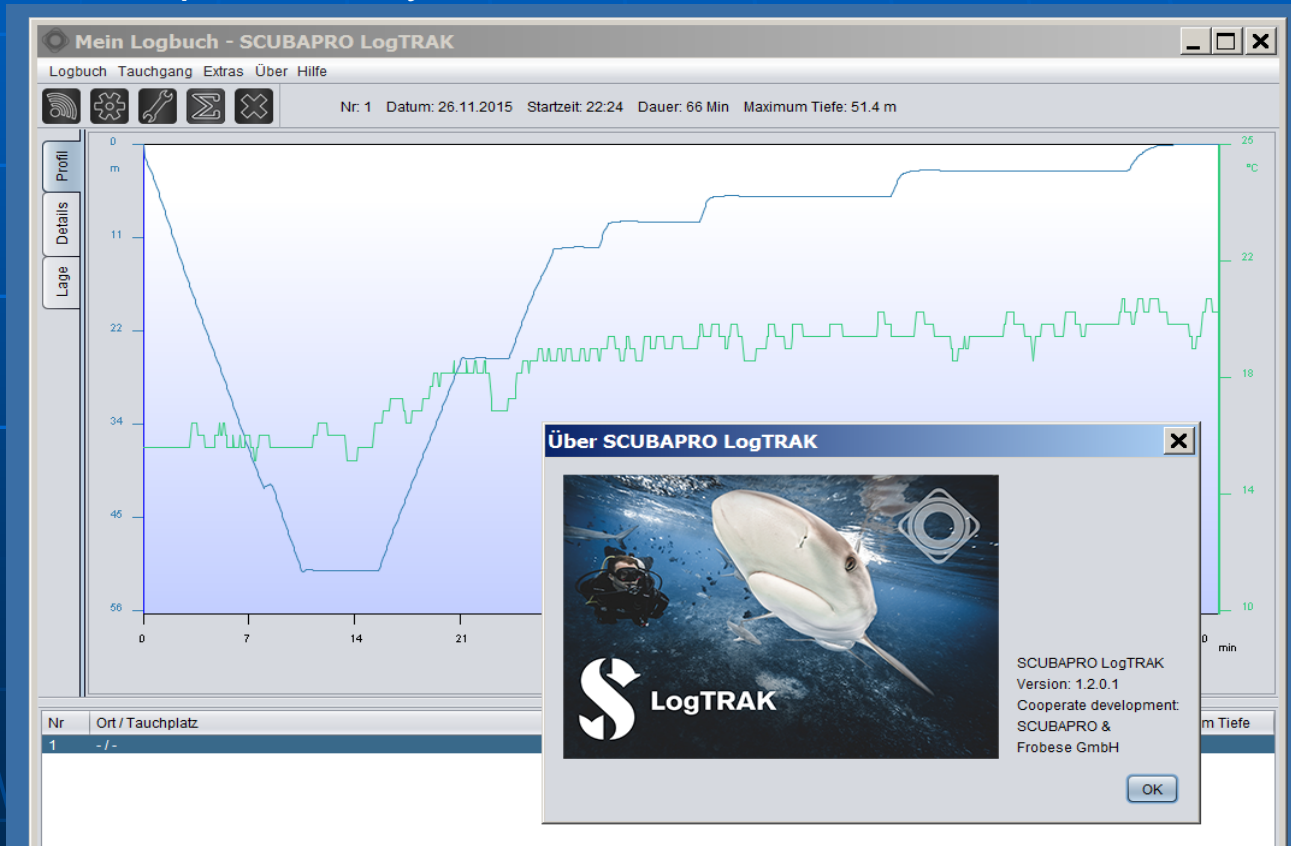
SCUBAPRO® LogTRAK & DAN DL7 level 3

SUB
MARINE
CONSULTING

Zur Zeit (04/2016) kann mit SCUBAPRO® LogTRAK, Version 1.2.0.1, kein DAN DL7 level3 File erzeugt werden: d.h. es können keine Tauchgangsprofile zu DAN zur Auswertung geschickt werden. Hier gibt es einen „work-around“, quick-&-dirty, in 17 Schritten:

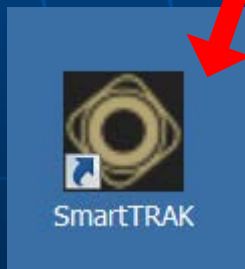


- 1) LogTRAK öffnen,
- 2) TG markieren
- 3) & exportieren:



SCUBAPRO ® LogTRAK & DAN DL7 level 3

- 4) TravelTRAK Format (*.asd)
auswählen
- 5) Speichern
- 6) LogTRAK schliessen
- 7) SmartTRAK öffnen



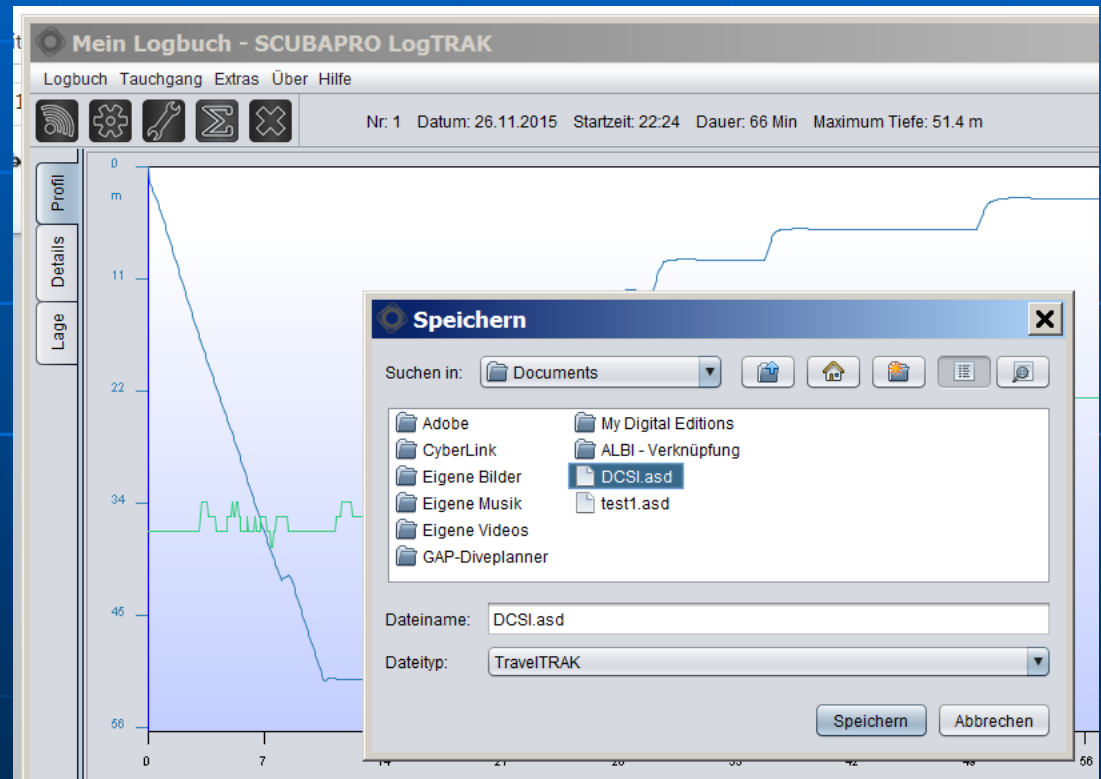
THE

SUB
MARINE
CONSULTING

GROUP

TEL AVIV – SAN FRANCISCO – STUTTGART

WWW.SMC-DE.COM



SCUBAPRO® LogTRAK & DAN DL7 level 3

THE

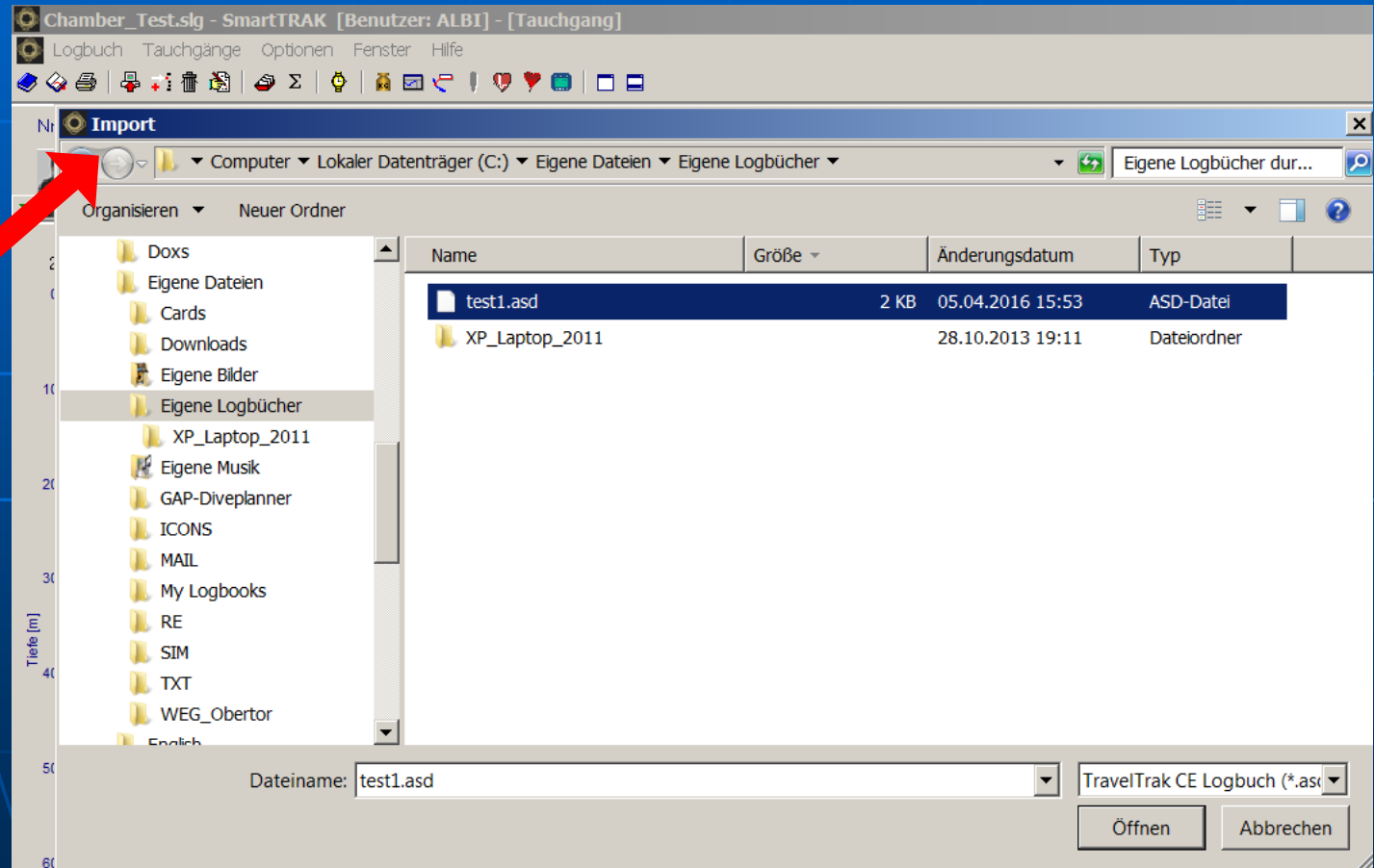
SUB
MARINE
CONSULTING

GROUP

TEL AVIV – SAN FRANCISCO – STUTTGART

WWW.SMC-DE.COM

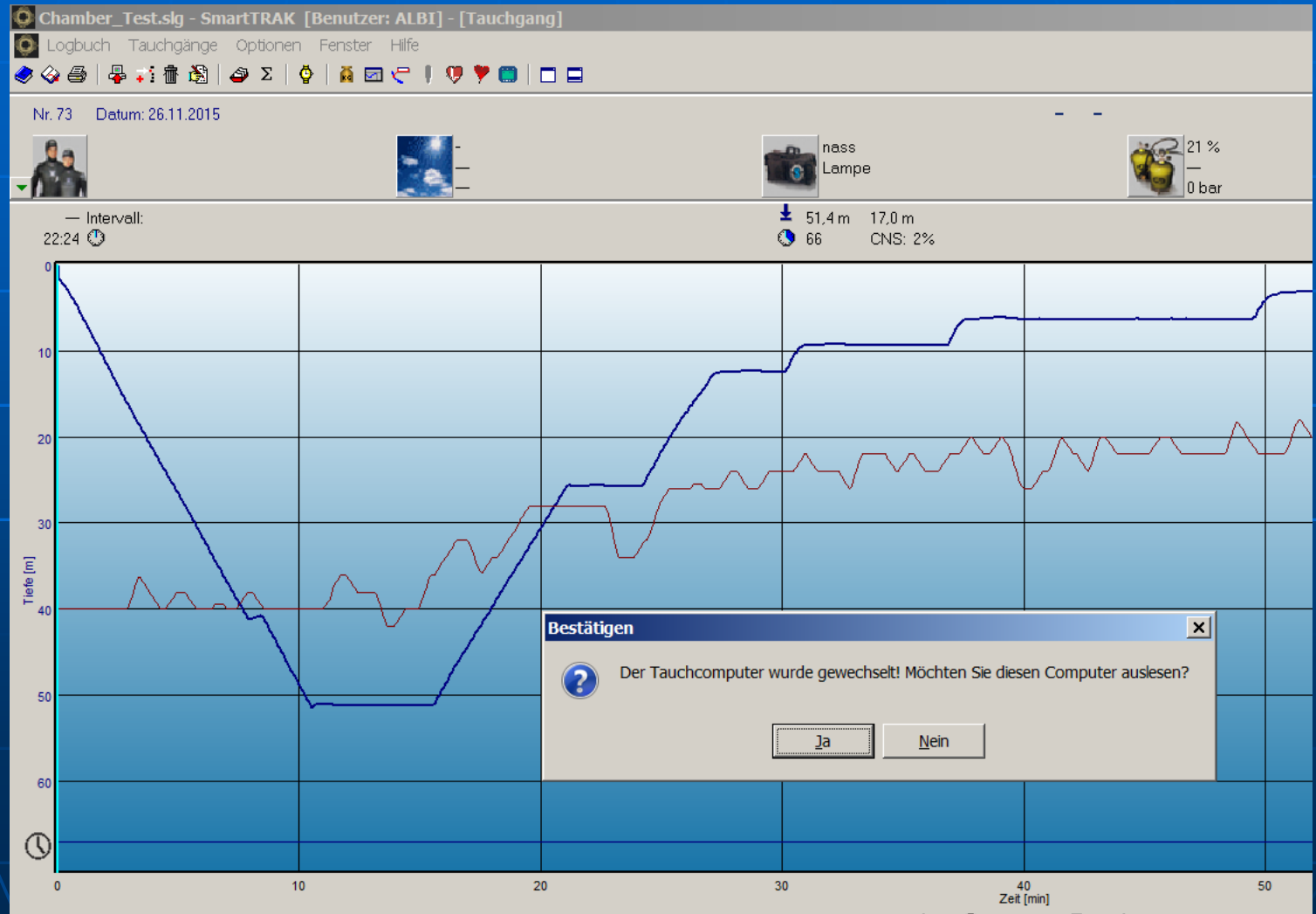
8) genau dieses
TG Profil
9) im
SmartTRAK
importieren:



SCUBAPRO® LogTRAK & DAN DL7 level 3

THE
SUB
MARINE
CONSULTING
GROUP
TEL AVIV – SAN FRANCISCO – STUTTGART
WWW.SMC-DE.COM

[
u.U.:
11)
mit „Ja“
bestätigen
]

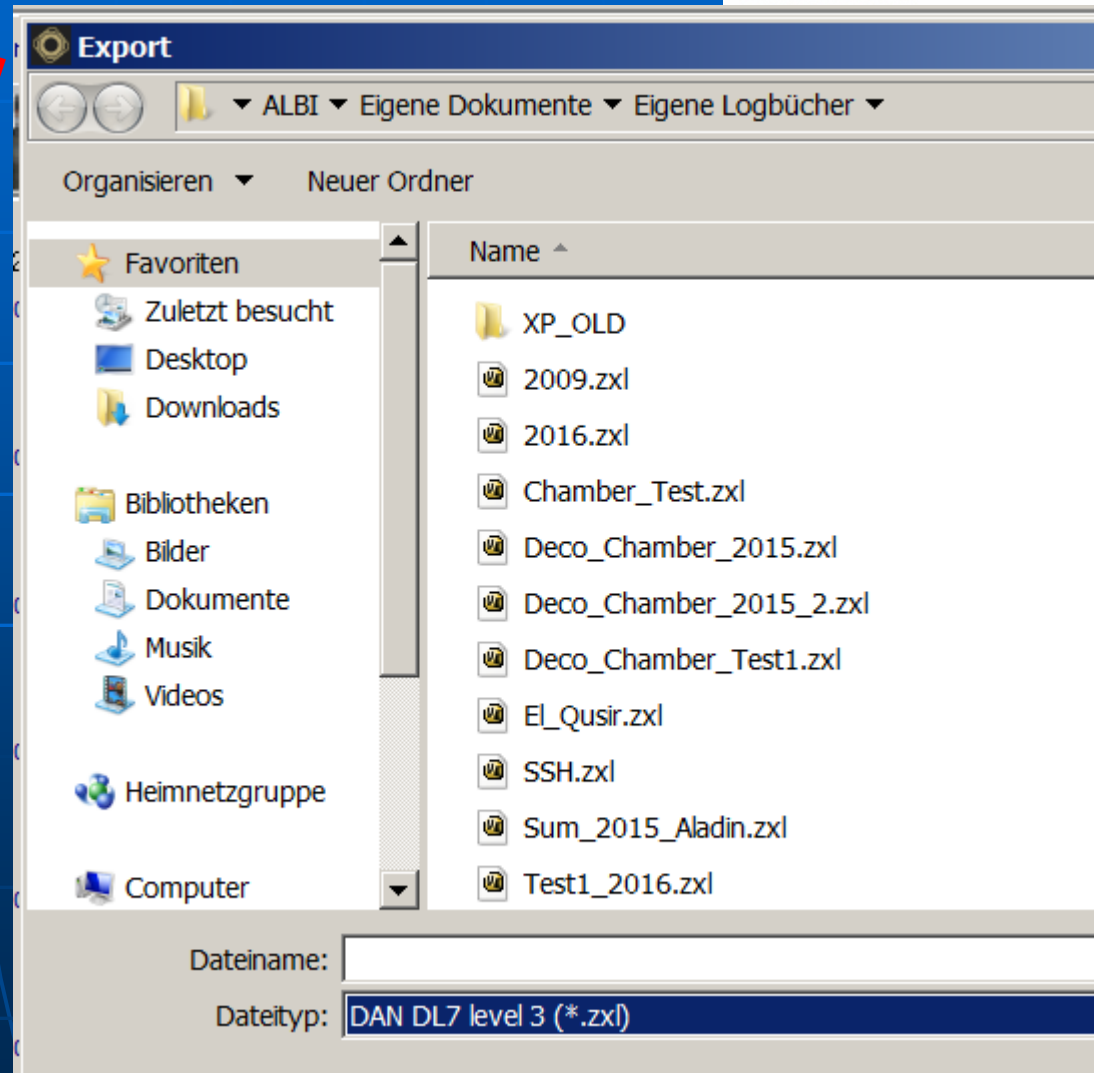
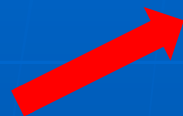


SCUBAPRO® LogTRAK & DAN DL7 level 3

THE
SUB
MARINE
CONSULTING
GROUP
TEL AVIV – SAN FRANCISCO – STUTT GART
WWW.SMC-DE.COM

12) TG Profil:
anzeigen lassen,
markieren
13) Exportieren:
14) als DAN
Dive Leader 7
(DL7) level 3,
also Dateendung:
zxl,

DAN DL7 level 3 (*.zxl)
15) Auswählen,
16) Speichern.



17) ... und dann ab damit zu DAN!
→ <https://daneuropedsl.org/>

THE
SUB
MARINE
CONSULTING
GROUP
TEL AVIV – SAN FRANCISCO – STUTTGART
WWW.SMC-DE.COM

